



TAYLOR'S
UNIVERSITY

Wisdom · Integrity · Excellence

Rise With The Best

ARCHITECTURE BUILDING & DESIGN



THE **FUTURE** OF ARCHITECTURE, BUILDING & DESIGN

At Taylor's University, we are constantly keeping ahead to ensure our students graduate future-ready. The 4th Industrial Revolution (4IR) will change the way business is done. This revolution is characterised by a range of new technologies that are fusing the physical, digital and biological worlds, impacting all disciplines, economies and industries. It will challenge the status quo of education and its graduates.

Like most progressive fields of studies, architecture, building & design is evolving at an exponential pace to keep up with global trends and needs. Here are some advancements that are being discussed, adopted and anticipated globally:

VR & IMMERSIVE ARCHITECTURE

Designs will soon be experienced using **VR**; enabling the users to fully immerse in

 **1:1**-scale, **3D** (BIM) model



SMART CITIES

The cities of the future are becoming a realisation with the use of **technology** today



ECO-FRIENDLY ARCHITECTURE & MATERIAL AWARENESS



include **healthy materials** that harm neither the planet or communities

COLLABORATIVE ARCHITECTURE

Collaborate with more experts from different fields who are creating **nurturing, sustainable and meaningful** environments



No more

PUBLIC VS. PRIVATE SPACE

- New infrastructure with economic, environmental and social value
- Creating inclusive spaces that share the same palpable values



We continuously focus to research what's ahead to ensure we have the capacity, skills and knowledge to equip our students with unconventional teaching and learning methods.

WHY ARCHITECTURE, BUILDING & DESIGN AT TAYLOR'S?



▶ YOUR FUTURE IS OUR PRIORITY

Strongly anchored in the philosophies of sustainable design and a people-centred approach, we ensure that our graduates are in touch with current trends and well-equipped to embrace the challenges of the 4IR.



▶ CONVENTIONS ARE MEANT TO BE BROKEN

We endeavour to instil a desire to continuously improve the quality of the environment for individuals and the community at large, by challenging them to not just 'think out-of-the-box, but create their own box and break it'.



▶ WE WILL GET YOU READY

We encourage our students to stand for more and to realise their imagination. We are here to ensure our students get more than just education, but a holistic learning experience.



▶ TAYLOR'S CURRICULUM FRAMEWORK (TCF)

Breaking conventions to bring you the first-of-its-kind framework in Malaysia that allows you to mix and match modules to customise your degree.



▶ PROFESSIONAL RECOGNITION

Our Architecture and Quantity Surveying degrees are accredited by local and international professional boards that raise the bar of our graduates and ensure they meet international industry standards.



▶ EXTENSIVE EXPOSURE

Our students attend site visits, field trips, technical visits, participate in professional network annual gatherings around the world to expand their scope of cultures, languages, design ideas and construction techniques.



▶ LEVERAGED NETWORKING

Our extensive academic links and industry network provide opportunities for collaboration in teaching, learning, research and student mobility. The programmes are benchmarked against the industry's best practices equip our students to succeed.



▶ WORLD-CLASS STANDARDS, FACILITIES AND ENVIRONMENT

Students at Taylor's have access to the latest technology, state-of-the-art facilities and are surrounded with a vibrant student life.

PUSH BOUNDARIES

INNOVATIVE & EXPERIENTIAL METHODS OF TEACHING & LEARNING

TAYLOR'S CURRICULUM FRAMEWORK (TCF)



FLEXIBILITY IN CUSTOMISING YOUR DEGREE

An increasing number of employers, including top conglomerates like Google and Deloitte, are placing less value on academic credentials. They prize talents with:

- APTITUDE
- ACQUIRED SKILLS
- PERSONALITY
- INDUSTRY KNOWLEDGE

This is supported by studies such as Corporate Recruiters Survey 2015.

The report released by the **Graduate Management Admission Council** showed that:

92% of recruiters surveyed would consider a candidate based on their proven ability to perform

AT TAYLOR'S, WE GET YOU READY!

The **TCF** is the first-of-its-kind in Malaysia



The uniqueness of this framework allows you to **CUSTOMISE YOUR DEGREE**

You can now **PAIR** your major from the School of **ARCHITECTURE, BUILDING & DESIGN** with other modules of your choice. Or even get a **2ND MAJOR** in other fields to complement your degree.



In other words, you have **CONTROL** of your **FUTURE!**

THE 3 KEY STRENGTHS



FLEXIBLE

Transdisciplinary, highly flexible degree to design



BROAD-BASED

Exposure across multiple discipline areas



PERSONALISED

Personalise your course of study based on your own unique interests, strengths, aspirations and career ambitions

THE 3 KEY BENEFITS



GRADUATE MULTI-SKILLED

Be marketable with future-proof skills, enhanced with your unique interests and strengths



GRADUATE A GLOBAL CITIZEN

Be global and culturally adaptive through international mobility opportunities



GRADUATE FUTURE-READY

Be adaptable to high job mobility through independent self-directed learning

AN UNCONVENTIONAL FRAMEWORK

TAYLOR'S CURRICULUM FRAMEWORK (TCF)



PRIMARY MAJOR

PRIMARY CORE

Common core modules within the primary discipline

SPECIALISATION

Specialised modules related to primary field of study



UNIVERSITY CORE

COMPULSORY GENERAL MODULES BY MOE

- Hubungan Etnik / Malaysian Studies 3
- Tamadun Islam dan Tamadun Asia / Bahasa Melayu Komunikasi 2
- Community Service Initiative

SPECIALLY-DESIGNED UNIVERSITY MODULES

- Life Skills for Success & Well-Being
- Millenials in Malaysia: Team Dynamics and Relationship Management



COMPLEMENTARY STUDIES

Students are given the opportunity to mix and match modules. They can complement their primary major with the below:

FREE ELECTIVES

Choose 5 – 7 electives from three clusters which are not related to the primary major. These clusters include:

- Arts, Humanities and Social Sciences
- Business, Services and Management
- Science, Technology and Society

MINOR

Gain breadth of knowledge by taking five set modules (or total 20 credit hours) outside of a particular major field of study. There are 54 minors offered.

2ND MAJOR

A second major provides students the opportunity to master another field of study by taking 12 set modules (or total of 48 credit hours) in another field or discipline. Choose from 11 majors.

EXTENSION

Expand depth of knowledge by taking five set modules (or total of 20 credit hours) in a specific area within a major field of study. There are 21 extensions available.



TYPICAL PROGRAMME STRUCTURE

Year 1

Same Discipline Modules

Year 2

Same Discipline Modules

Year 3

Same Discipline Modules



MPU Subjects

RESEARCH FUELS INNOVATION

DESIGN FUNCTIONAL LEGACIES WITH MASSA



Established in 2005, our Modern Architecture Studies in Southeast Asia (MASSA) research centre aims to create awareness of modern architectural heritage by documenting intellectual and physical heritage of modern architecture in the region.

We address the urgent need to include modern architecture as part of the architectural heritage in Southeast Asia (SEA).

Our students have visited Kampung Cina, Kuala Terengganu, to examine the site and produce detailed drawings used to restore a temple to its former glory, after it was partly ruined in a fire.

Some of our other student research projects include:

1. Guang Zhong Folk Art Museum, Xi An, China
2. Modern Architecture Kuala Lumpur Series featuring Masjid Negara
3. Muzium Negara, Stadium Negara, Stadium Chin Woo and British Council
4. The Inventory of Sungai Buloh, Leprosy Settlements, Selangor
5. Chapel of St. Francis Institution, Malacca
6. No. 6, Hereen Street, Bandar Hilir, Malacca
7. Cheng Hoon Teng Temple, Malacca
8. Harbour Kuli Culture Gallery, Malacca
9. Church of St Theresa, Malacca
10. Melaka Fui Chew Association, Malacca
11. Geographer Café, Malacca
12. Fwu Chang Trading, Malacca
13. Johor Old Chinese Temple, Johor Bahru
14. Hilltop Private School, Johor Bahru

15. Church of the Immaculate Conception Johor, Johor Bahru
16. Kedah State Art Gallery, Alor Setar, Kedah
17. Kedah Royal Museum, Alor Setar, Kedah
18. Kedah Old State Museum, Alor Setar, Kedah
19. Rumah Tok Su, Alor Setar, Kedah
20. Rumah Encik Nazim, Alor Setar, Kedah
21. Sun Yat San Museum, Georgetown, Penang
22. Ng Clan Association, Georgetown, Penang
23. Wu Di Temple (Temple of of the God of War), Georgetown, Penang
24. Toi Shan Nin Yong Association, Georgetown, Penang
25. State Chinese Penang Association, Georgetown Penang
26. No. 5,6,7, Lorong Ikan, Georgetown, Penang
27. Church of the Immaculate Conception Penang, Georgetown, Penang
28. Residence of Ku Din Ku Meh, Georgetown, Penang
29. Wisma Yap Chor Ee, Georgetown, Penang
30. No.28, Kimberly Street, Georgetown, Penang
31. No.94, Lebu Melayu, Georgetown, Penang
32. Ipoh Railway Station, Ipoh, Perak
33. Darul Ridzuan Museum, Ipoh, Perak
34. Ipoh Town Hall, Ipoh, Perak
35. Lim Ko Pi, Ipoh, Perak
36. Sarang Paloh, Ipoh Perak
37. Sin Sze Si Ya Temple, Kuala Lumpur
38. St. Mary Cathedral. Kuala Lumpur
39. Royal Selangor Club, Kuala Lumpur
40. No.3 & No.28, Jalan Stesen 1, Klang, Selangor
41. Church of Our Lady of Lourdes, Klang Selangor

PROJECT OUTCOME EVENT SHOWCASE



Religious Traditional Architecture
Measured Drawing & Model
Exhibition





Melaka Measured Drawing & Local Community Old Photographs Exhibition





**Architecture, Community & Memories:
Jln Stesen 1, Klang Measured Drawing
Project Sharing Session**



▶ EXTENSIVE EXPOSURE

Students are exposed to real life scenarios and industry-relevant experiences. By participating in site visits, they learn how to compose and analyse space, outside of their screens and textbooks.

FIELD TRIPS

Students undertake educational visits to various places of interest both locally and abroad, such as art galleries, historical sites, and factories to witness the concept of architecture and design in practice.

- Dive Centre, Pulau Redang
- Jonker Street, Malacca
- Taiping Zoo, Perak
- Signal Hill Community Centre, Sabah
- Egyptian Tourism, KL
- Chew Jetty, Penang
- Bentong, Pahang
- Cameron Highlands, Pahang
- Bauhaus International Summer School, Dessau, Germany
- London, Edinburgh & York, United Kingdom
- Henderson Wave Bridge, Singapore
- Gardens by the Bay, Singapore
- Royal Selangor Visitor Centre, Selangor
- Church of Our Lady of Guadalupe, Selangor
- Rimbun Dahan, Selangor
- Port Dickson, Negeri Sembilan
- Photovoltaic (PV) System Manufacturing Factory, Pahang



Jonker Street, Malacca



Chew Jetty, Penang



Bentong, Pahang



Cameron Highlands, Pahang



Bauhaus International Summer School, Dessau, Germany



London, Edinburgh & York, United Kingdom



Port Dickson, Negeri Sembilan

TECHNICAL VISITS

On-site technical visits provide students the opportunity to understand industry construction methodologies, project management concepts, tools and techniques.

- Morib Sand Castle Building Competition
- Kelana-Subang Elevated Highway Link
- The Pinnacle Sunway Site Visit
- PAM Architecture Student Workshop
- RICS-RISM International Undergraduate Student Conference
- Royal Institution of Surveyors Malaysia (RISM) QS Jamboree
- Hyundai Veloster Rev-It-Up Inter-College Challenge
- Penang Eco Retreat Student Ideas Competition
- KL Pac Open Day
- Creative Mafia @ Youth



Morib Sand Castle Building Competition



Kelana-Subang Elevated Highway Link



The Pinnacle Sunway Site Visit



PAM Architecture Student Workshop



RICS-RISM International Undergraduate Student Conference



Hyundai Veloster Rev-It-Up Inter-College Challenge



Penang Eco Retreat Student Ideas Competition



KL Pac Open Day

INTERNATIONAL EXPOSURE

As your vested partner throughout your education journey, future-proofing you is our priority. To do that we ensure our students have local and international exposure.



Sarah Ahmad

“

The annual Activity Week allows us to travel overseas, and as an architecture student, traveling and seeing the different designs, buildings and artwork is truly inspirational. I personally love to learn from experience instead of the traditional academic approach, so the fact that we are given the chance to travel with our peers and lecturers, is great!



ACTIVITY WEEK

Students get to expand their scope of cultures, languages, design ideas and construction techniques with travel experiences to destinations around the world. This gives them first-hand insights into how the built environment is influenced by its surroundings.



- 01 New York, USA
- 02 Barcelona, Spain
- 03 Amsterdam, Netherlands
- 04 Rome, Italy
- 05 Mosco & Saint Petersburg, Russia
- 06 Istanbul, Turkey
- 07 Petra, Jordan
- 08 Cairo, Egypt

- 09 Dubai, United Arab Emirates
- 10 Nepal, India
- 11 Agra, India
- 12 Colombo, Sri Lanka
- 13 Beijing, China
- 14 Shanghai, China
- 15 Yunnan, China
- 16 Hong Kong, China

- 17 Seoul, South Korea
- 18 Tokyo & Kyoto, Japan
- 19 Hanoi, Vietnam
- 20 Bangkok, Thailand
- 21 Siem Reap, Cambodia
- 22 Singapore
- 23 Yogyakarta, Indonesia
- 24 Bali, Indonesia

BECOME FUTURE-PROOF

GLOBAL AND LOCAL LINKAGES WITH THE INDUSTRY AND PANELS

INDUSTRY EXPOSURE

We teach students how to understand industry needs and behaviours, challenge conventions and think out-of-the-box through exposure.



▶ PROFESSIONAL NETWORKS

Students have the opportunity to participate in annual gatherings organised by Pertubuhan Akitek Malaysia (PAM), The Royal Institution of Chartered Surveyors (RICS) and The Royal Institution of Chartered Surveyors Malaysia (RISM), providing networking opportunities.



▶ EXPOSURE TO CREATIVE SOLUTIONS

We provide various platforms for students to compete, showcase and highlight their work, at national and international levels.



▶ LEVERAGED NETWORKING

Our extensive academic links and industry alliances ensure that our programmes are benchmarked against industry standards, thus remaining relevant with the latest trends.



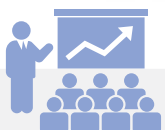
▶ INDUSTRY ADVISORY PANEL

The IAP consists of leading professionals and industry experts, who work closely with us to ensure that the curriculum offered is up-to-date with current industry practices and requirements assisting students with industry placements and career opportunities.



▶ CONFERENCES

Conferences serve as a platform for faculty members and students to network and gain insight into the latest industry developments and best practices.



▶ WORKSHOPS

These interactive platforms are an opportunity for students to showcase and present their work every semester, to a panel of industry members and academics from different backgrounds to gain valuable feedback.

AWARDS & RECOGNITION

PROFESSIONAL RECOGNITION

- First private university to be accredited by the Board of Architects Malaysia Lembaga Arkitek Malaysia (LAM).
- Our programme meets the requirements of LAM, ensuring that graduates are eligible for exemption from the LAM Part 1 Examination
- The Quantity Surveying (QS) programme is acknowledged and accredited by leading international boards, including the Royal Institution of Chartered Surveyors (RICS), the Pacific Association of Quantity Surveyors (PAQS) and the Board of Quantity Surveyors Malaysia (BQSM).
- RICS accreditations place our QS graduates on par with international standards, meeting the requirements for professional surveyors from over 140 countries.

Our programmes meet the rigorous standards of these professional accreditation boards, due to our stringent entry requirements, comprehensive curriculum, students' work and achievements, as well as the qualified teaching faculty.

These professional recognitions enhance our students' career opportunities and ease the pathway for them to further their studies or pursue a professional qualification.



Glen Jonathan Muga

“

The reason I chose to study Quantity Surveying at Taylor's is because of its accreditations with BOSM, RICS and PAQS. This is certainly beneficial to us as QS graduates, as it increases our chances in securing a job upon graduation.



▶ BOARD OF ARCHITECTS MALAYSIA OR LEMBAGA ARKITEK MALAYSIA (LAM)

The Board of Architects Malaysia or Lembaga Arkitek Malaysia (LAM) is the Malaysian statutory authority responsible for the enforcement of the Architects Act. The Board has many roles and functions, one of them is to accredit architectural programmes offered in Malaysia.



▶ BOARD OF QUANTITY SURVEYORS MALAYSIA (BQSM)

Board of Quantity Surveyors Malaysia (BQSM) is a statutory body, governing the quantity surveying profession and promoting the growth of the quantity surveying profession through regulation and continuous professional development.



▶ ROYAL INSTITUTION OF CHARTERED SURVEYORS (RICS)

The Royal Institution of Chartered Surveyors (RICS) is the world's leading professional body for qualifications and standards in property, land and construction. RICS memberships offer a global passport to professional opportunities in more than 140 countries.



▶ PACIFIC ASSOCIATION OF QUANTITY SURVEYORS (PAQS)

The Pacific Association of Quantity Surveyors (PAQS) is an international association of national organisations representing quantity surveyors in the Asia and Western Pacific region. One of the main roles of PAQS is to promote best practices of quantity surveying in the region.

RECOGNITION FOR PUSHING BOUNDARIES



Lilian Tan Ai Jun

Best Presenter at the 10th RISM-RICS International Surveying Conference for Undergraduates 2018



Michelle Chung Chien Yin (Graduate)

Lars Lerup Prize 2017 at the Dessau International Architecture Graduate School for her project titled COMO



Lim Tian Jing (Graduate)

1st Place of the Robert Oxman Award for Best Thesis Project at the Dessau International Architecture Graduate School in Germany in 2018

His project titled PENANG2095 also won the aforementioned 2018 Drawing of the Year Competition



N.A. Munawwar, Seng Guan, Yee Pei, Rachael Cheong, M. Daniel, Kuo Chen, Cheong Soon, Si Ling, Peidi & Pui Yan

Gold Medal Award at the Malaysian Institute of Architect's PAM Annual Architecture Student Works Exhibition 2017



Amos Tan, Lee Yih, Wei Shuen, Jia Jun, Joe Onn Lim, Chee Siang, Daniesh Ashik, Aimi Farzana, Ivy Voo & Zu Jing

Silver Medal for Best Booth Display Award at the Malaysian Institute of Architect's PAM Annual Architecture Student Works Exhibition 2016



Masrur Akmal, Daniel Rosien, Ameer Farhan, Daniesh Ashik, Jack Too, Gabriel Liew, Philia Chua, Yong Zhou, Raymond Tang, Ee Von & Szi Wei

1st Runner up in the PAM Student Workshop 2016 in the Architectural Installation Competition category



Hiren Siva, Syafiq Deen, Arina Nadia, Philip Koh, Akmal Jamal, Ameer Farhan, Syed Aswad, Allester Shaun, Daniesh Ashik, Nazrul Kamsol & Sheryl Tan

1st prize in the PAM Architectural Workshop 2016 in the Multimedia Video category





Joe Onn Lim

1st prize in the Malaysian Institute of Architect's PAM Architectural Workshop 2016

1st prize - Photography - Dimensionless Limit in the PAM Architectural Workshop 2016



**The Axis Team -
Soh Yong Zhou, Daniel Rosein,
Ameer Farhan bin Ramlan, Daniesh Ashik
Selveswaran, Jack Too Mun Fai,
Gabriel Liew Chung Hooi,
Masrur Akmal bin Jamal, Philia Chua Yi Sian,
Raymond Tang Wei Xin,
Cheah Ee Von, Chu Szi Wei**

1st Runner-up in the PAM Student Workshop at Architectural Installation Competition



Fong Ize Ying

1st Runner-up in the PAM Student Workshop Architectural Design Competition



Lim Yee Zhing, David Koo Mei Da

1st Runner-up and Best Poster Award at Hong Kong National Challenge Cup
*Wheels of Change:
Innovating ideas for smart-green bicycles*



**Ben Lau Hao Shun, Ong Wei Hoow,
Usen Octonio**

2nd Runner-up at the Hong Kong National Challenge Cup
Transforming Monsoon Flow: Innovating smart-green open spaces for monsoon drains



**Hirendran Sivaganam,
Syed Aswad Al Jaffree bin Syed Sobri,
Jolene Hor Wei Fern,
Muhammad Zulkarnain bin Abdul
Rahman Richard**

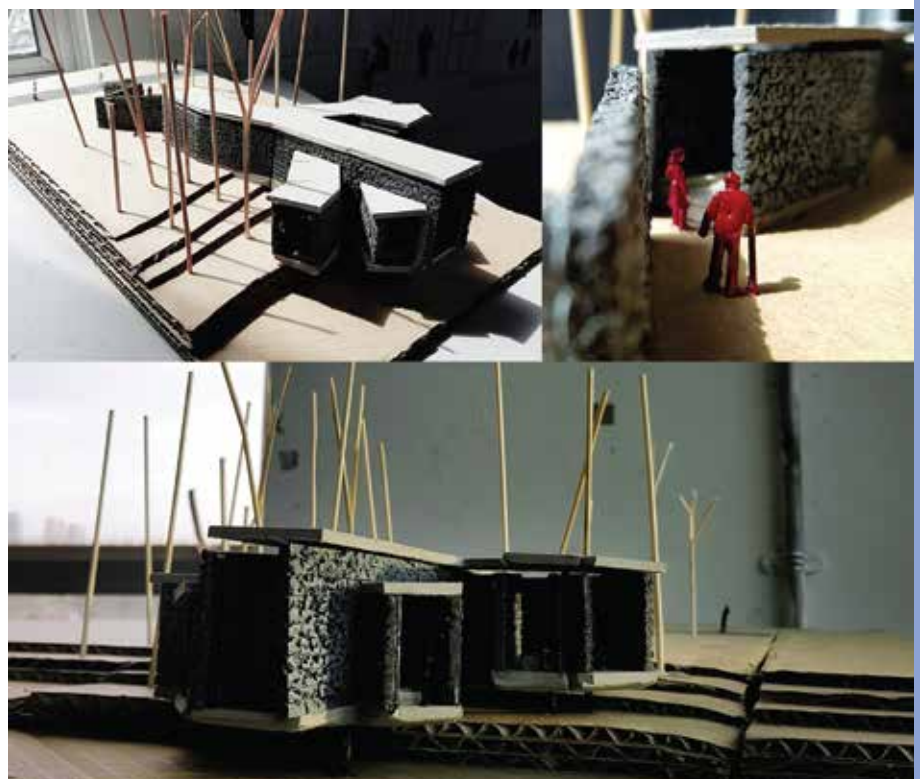
2nd Runner-up in the PAM Student Workshop at Architectural Multimedia Competition

SHOWCASE WHAT OUR STUDENTS STAND FOR. MORE.

**Abirami Ravichandran,
Ang Jia Qin, Jackson Goh Ding Yuan,
Lee Wen Yi, Mohamed Amin Abubakar**
*Architectural Design I -
1:1 Tectonics*



Chai Paul Le
*Architectural Design II -
Experiential Pavilion*



Cheah Chen Xi
*Architectural Design I -
Interpretation & Representation*



Timothy Tang Ing Wang
*Architectural Design II -
Experiential Pavilion*

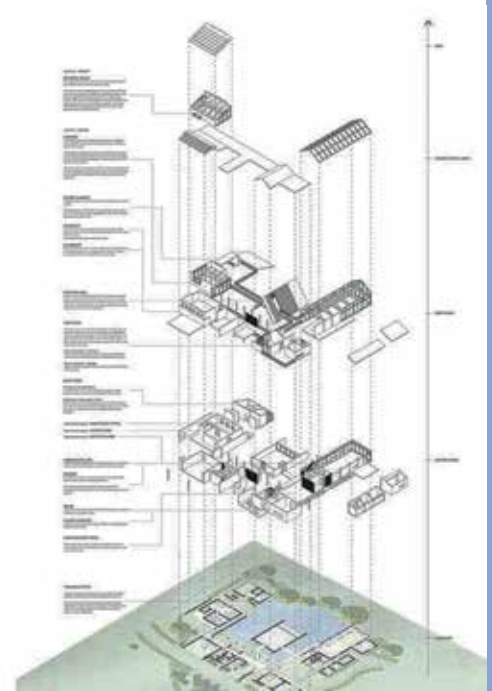
Rachael Lim Feng Yi
*Architectural Design III -
Visitor Interpretive Center*



Yew Jey Yee
*Architectural Design III -
Visitor Interpretive Center*



Ryan Sak
 Architecture Design IV -
 Center for Single Mothers

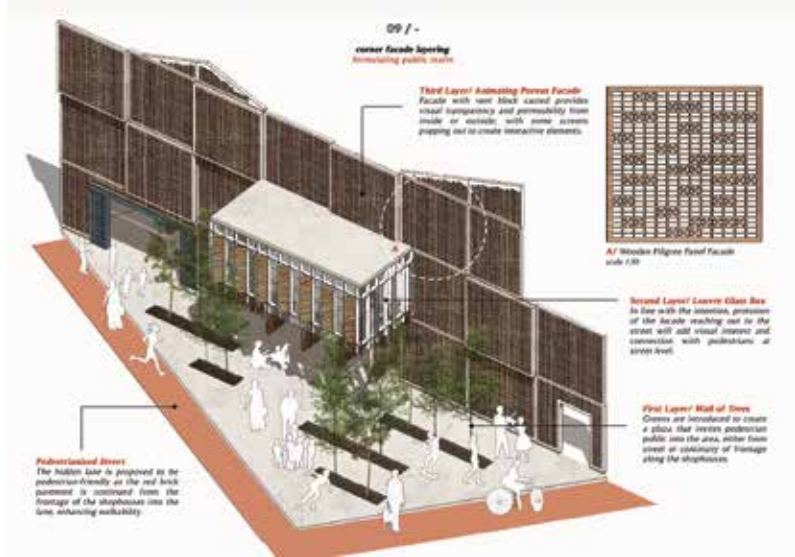


Ellyn Peh
 Architecture Design IV -
 Center for Single Mothers



Ng Pui Yan
 Architecture Design V -
 Learning Center for All

Kelvin Bong Jia Ying
 Architecture Design V -
 Learning Center for All



Ng Kwang Zhou
 Architectural Design Project -
 Co-Working: A Collaborative
 Community



Barbara Chang Huey Yi
 Architectural Design Project -
 Co-Working: A Collaborative
 Community

REFERENCE LIST

Ferro, S. (2015, March 03). 5 Trends Shaping The Future Of Architecture. Retrieved from FastCompany:
<https://www.fastcompany.com/3042937/5-trends-shaping-the-future-of-architecture>

Gold, J. (2019, January 3). Three Hot Wellness Architecture Trends For 2019. Retrieved from Forbes:
<https://www.forbes.com/sites/jamiegold/2019/01/03/three-hot-wellness-architecture-trends-for-2019/#7ff801f4f2ac>

Grozdanic, L. (2015, November 21). 5 Emerging Trends that will shape the future of architecture. Retrieved from Archipreneur:
<https://archipreneur.com/5-emerging-trends-that-will-shape-the-future-of-architecture/>

Holmes, D. (2019, January 14). Landscape Architecture trends for 2019. Retrieved from Worldlandscaperarchitect:
https://worldlandscapearchitect.com/landscape-architecture-trends-for-2019/#.XHNja_Zul2w

LTD, T. S. (2017, January 6). Emerging Trends that will shape the future of architecture. Retrieved from Medium:
<https://medium.com/studiotmd/emerging-trends-that-will-shape-the-future-of-architecture-356ba3e7f910>

TAYLOR'S UNIVERSITY

YOUR PORTAL TO THE FUTURE



Since its inception, Taylor's has continuously provided excellent services for its students in terms of diverse study options, relevant curriculum and teaching methods, ongoing partnerships with leading universities worldwide, strong industry linkages, up-to-date facilities and well-equipped campuses. Taylor's University offers a myriad of courses in tertiary education, from diploma, to degree, post-graduate and professional programmes. Students can choose to enroll in courses encompassing fields such as Business, Hospitality, Tourism, Psychology, American Degree Program, Architecture, Quantity Surveying, Communications, Law, Computer Science, Design, Engineering, Pharmacy, Biosciences, Food Studies & Gastronomy, Medicine, Education and Performing Arts.

The quality of the undergraduate teaching and learning at Taylor's was acknowledged when it garnered a 'Tier 5: Excellent' rating in the Rating System for Malaysian Higher Education (SETARA) by the Ministry of Higher Education Malaysia in all four audit exercises. Taylor's University is the best private university in Malaysia for the graduate employment rate indicator under the QS Graduate Employability Rankings 2020 exercise; ranked at no. 135 in Asia in the QS Asia University Rankings 2019, and listed in the top 1 percent of universities in Asia. Taylor's University was also awarded 5-Star rating in six (6) categories of the QS Stars Rating. Taylor's University was also recognised as the number 14 university in the world for Hospitality & Leisure Management by QS World University Rankings by Subject 2019. Taylor's was listed in the top 2% universities in the world by QS World University Rankings. These achievements are important milestones for Taylor's, in line with its aim of becoming one of Asia's leading universities.

Taylor's has received numerous recognitions locally and internationally from professional bodies such as the CDIO Initiative (Conceiving, Designing, Implementing, Operating), National Academy of Engineering in the USA and the Royal Institution of Chartered Surveyors (RICS) to name a few.

Taylor's continues to play a strong role in developing Malaysia's human resource capital, and boasts a 100,000-strong alumnus, many of whom have become leaders in their respective fields.

ACHIEVEMENTS

OUR AWARDS VALIDATE OUR WORLD-CLASS GRADUATES, STANDARDS & FACILITIES

17
AWARDS



ranking
& ratings
and more from
2016 to 2019

135th

in the 2019



TIER **5:**
EXCELLENT

Rating System for
Malaysia Higher
Education (SETARA)
by the
Ministry of Higher
Education Malaysia

TOP
PRIVATE
UNIVERSITY

in Malaysia
for Graduate
Employability
Rankings 2020

Listed in the
TOP 1%
UNIVERSITIES
ASIA



No. **1**
in Business &
Management
Studies

amongst all
Private Universities
in Malaysia in the 2019



by subject

No. 14

in the world for
Hospitality & Leisure
Management Subject
in 2019



TOP 2%
UNIVERSITIES
WORLDWIDE



9 consecutive
years of

Gold Award
in the
'Education
& Learning'
category in
Putra Brand Awards



AWARDS



Private University in Malaysia for Employer Reputation

QS Asia University Rankings 2019
 QS World University Rankings 2020
 QS Graduate Employability Rate 2020



GOLD, 2010 - 2018
 PLATINUM, 2019
 HALL OF FAME, 2019

QS WORLD UNIVERSITY RANKINGS

PUTRA BRAND GOLD AWARDS



Malaysia Rating for University and University College Excellence

PERFORMANCE RATING BY MINISTRY OF HIGHER EDUCATION



HOSPITALITY AND TOURISM
 D-SETARA
 OUTSTANDING RATING

READER'S DIGEST TRUSTED BRAND GOLD AWARDS



2011 - 2019

2019

- Top 1% in the world and No. 1 in Malaysia for Employer Reputation based on QS World University Rankings 2020 among Private Universities in Malaysia
- No. 1 in Business and Management Studies amongst all Private Universities in Malaysia in the 2019 QS World University Rankings by Subject
- We've moved up 7 spots to clinch World No.14 in the 2019 QS World University Rankings by Subject for Hospitality and Leisure Management
- No. 1 private university in Malaysia for the graduate employment rate indicator in the 2020 QS Graduate Employability Rankings
- Awarded 5-Star rating in six (6) categories of the QS Stars Rating
- Platinum Award in the 'Education & Learning' category at Putra Brand Awards and inducted into the Putra Hall of Fame
- Gold Award in the 'Private University/College' category for the 9th consecutive year in the annual Reader's Digest Trusted Brand Awards

2018

- Ranked 135th in the 2019 QS Asia University Rankings
- 4th best university and Asia's best for the Graduate Employment Rate indicator in the 2019 QS Graduate Employability Rankings
- Placed 216th in the world for the Employer Reputation indicator in the 2019 QS World University Rankings
- Ranked 21 in the 2018 QS World University Rankings by Subject for Hospitality and Leisure Management
- Awarded 5-Star in five (5) categories of the QS Stars Rating
- Gold Award in the 'Education & Learning' category for the 9th consecutive year in Putra Brand Awards
- Gold Award in the 'Private University/College' category for the 8th consecutive year in the annual Reader's Digest Trusted Brand Awards

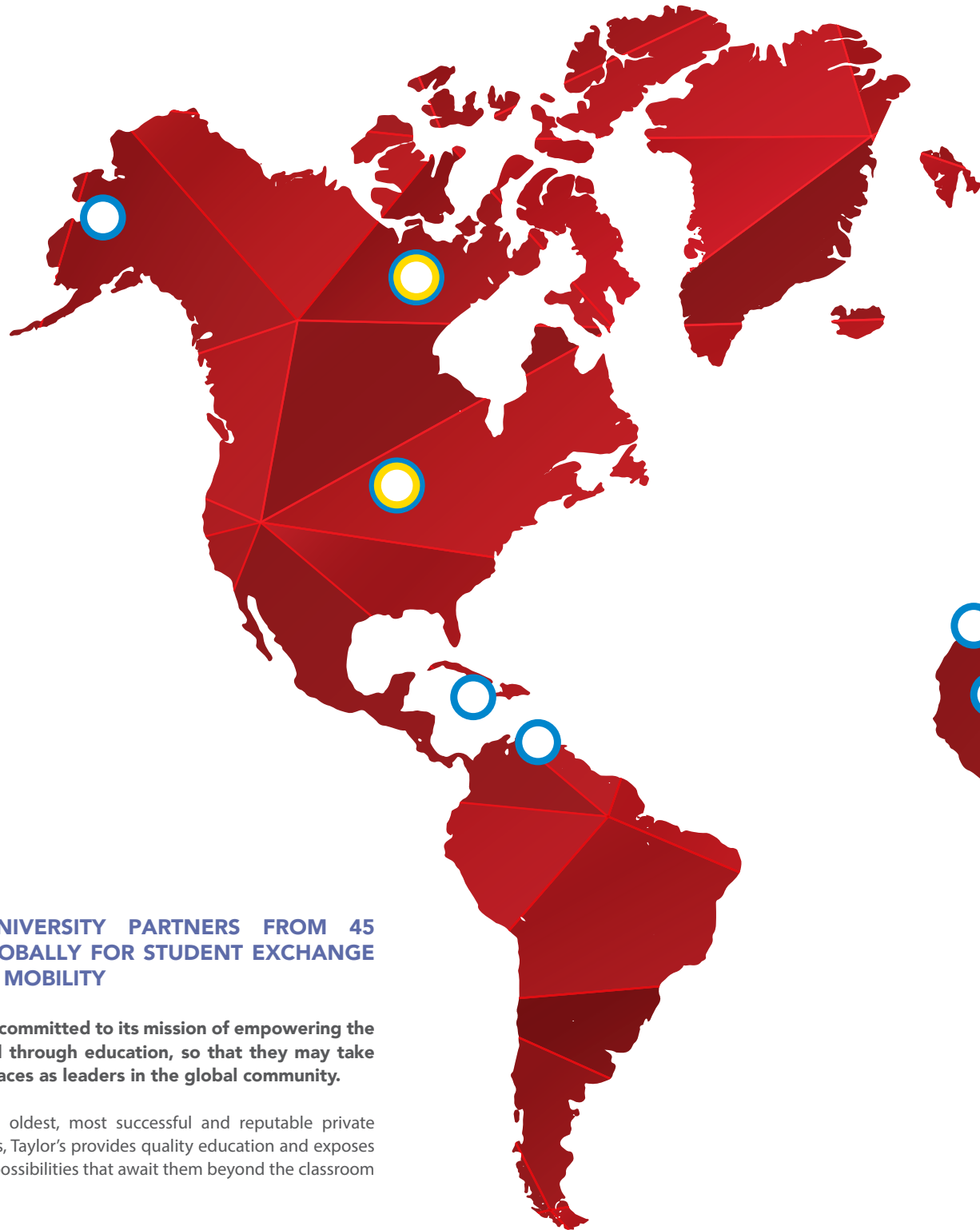
2017

- Top 200 universities in Asia in the QS Asia Ranking
- Awarded 5-Star rating in five (5) categories of the QS Stars Rating
- Gold Award in the 'Education & Learning' category for the 8th consecutive year in Putra Brand Awards
- Gold Award in the 'Private University/College' category for the 7th consecutive year in the annual Reader's Digest Trusted Brands Award

2016

- Top 200 universities in Asia in the QS Asia Ranking
- Awarded 5-Star rating in five (5) categories of the QS Stars Rating
- Gold Award in the 'Education & Learning' category for the 7th consecutive year in Putra Brand Awards
- Gold Award in the 'Private University/College' category for the 6th consecutive year in the annual Reader's Digest Trusted Brands Award

GLOBAL CONNECTIONS



OVER 250 UNIVERSITY PARTNERS FROM 45 COUNTRIES GLOBALLY FOR STUDENT EXCHANGE & SHORT TERM MOBILITY

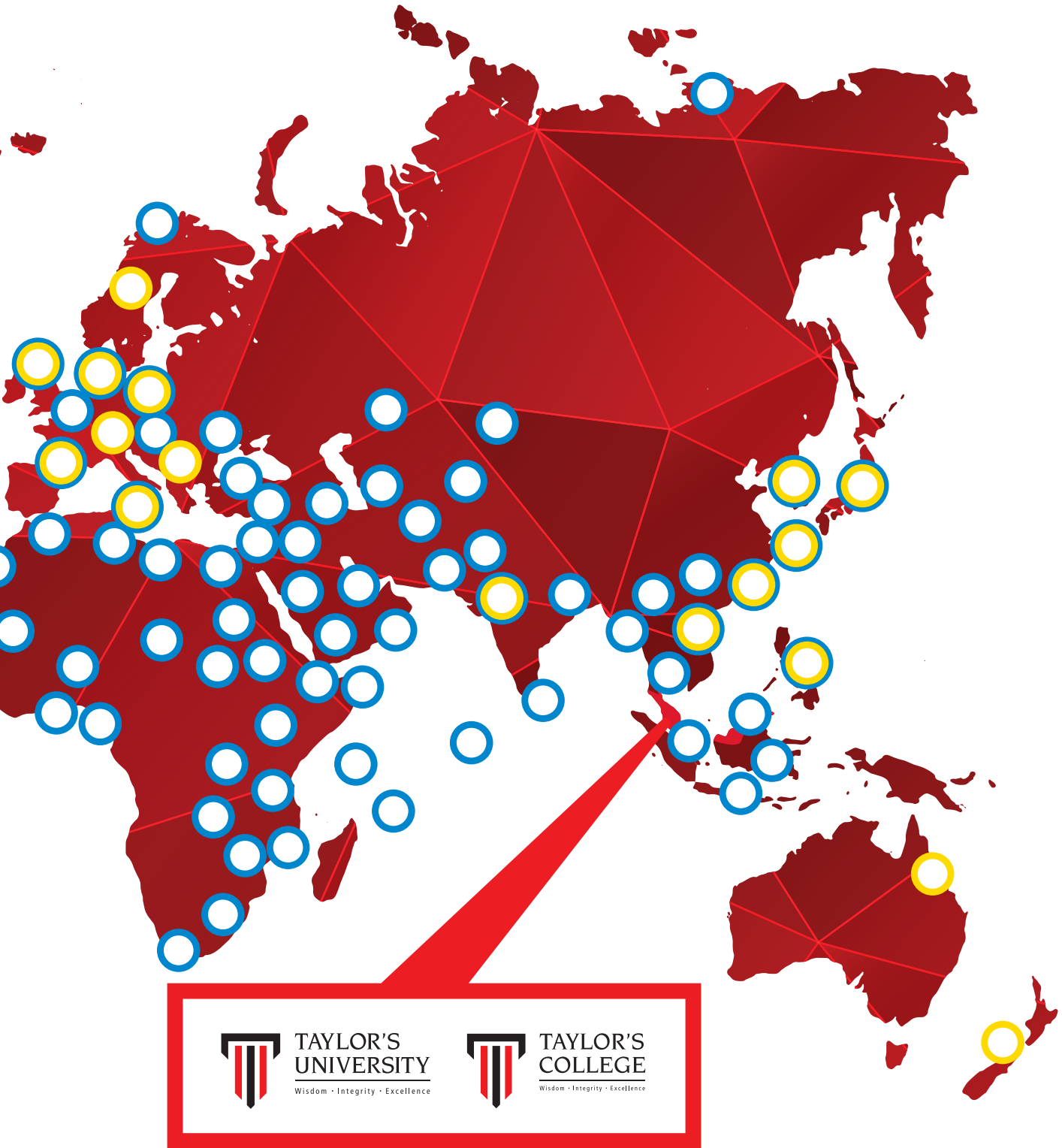
Taylor's is strongly committed to its mission of empowering the youth of the world through education, so that they may take their productive places as leaders in the global community.

As one of Malaysia's oldest, most successful and reputable private education institutions, Taylor's provides quality education and exposes students to the vast possibilities that await them beyond the classroom walls.

Through its partnerships with international universities and industry members, Taylor's is committed to providing an outstanding educational experience, guiding and helping students realise their potential to obtain a world-class qualification that meets the requirements of a dynamic, global marketplace.

Home to Our International Students

International Opportunities for Our Students



PRIORITISING RESEARCH & INNOVATION

OUR CHANGE COMPASS AND TELESCOPE INTO THE FUTURE

Taylor's University has a firm footing in research and innovation as we believe these efforts will contribute towards knowledge building and assist in the development of the industry and society at large now and for the future.

We are a university centered on research and innovation initiatives.

We adopt a progressive outlook, embedding research components throughout our programmes and encouraging them at various levels in each faculty.

Our students and faculty members engage extensively in "applied research", which enhances the body of knowledge and creates a direct impact on real world applications.

All academic staff appointed at the degree level actively undertake research within the institution or in collaboration with industries or universities, either foreign or local.

This research work results in creation and dissemination of new knowledge, feeding into the practical application, and ultimately enhances learning at Taylor's.

OUR RESEARCH CENTRES PLAY A CRUCIAL ROLE IN ELEVATING THE CAPABILITIES OF OUR FACULTY MEMBERS, THROUGH VARIOUS TRAINING ACTIVITIES AND TECHNOLOGY MAKING US WORLD-CLASS.



Law
(CRELDA)



Centre for Engineering
Research and Development
Engineering
(CERD)



CENTRE FOR ASIAN
FAMILY ENTERPRISE
Business
(CAFEB)



Architecture, Building
& Design (MASSA)



Business (Case &
Research Centre)



Hospitality, Tourism
& Food Studies (CRIT)



Communication
(SEARCH)

TAYLORS

TEACHING & LEARNING SUPPORT

ted

Teaching &
Educational
Development



TED complements the work of academic staff to create excellence in teaching through practice, development, and innovation.

We offer workshops and seminars that address a range of timely topics associated with teaching, learning and technology in higher education.

eLa

e-Learning
Academy



eLA's task is to help our academic staff effectively implement the use of technology in transforming the learning journey of students.

This enables them to learn in a collaborative, self-directed and personalised manner, anytime and anywhere.

SSC

Student Success
Centre



The Student Success Centre (SSC) assists students as they adjust to university studies.

SSC offers intervention for students via a blend of workshops, personalised 1-to-1 consultations and peer support services to provide learning opportunities throughout the students' journey towards academic success.

LIFE SKILLS MODULES & SHINE PROGRAMME

Rise With The Best

LIFE SKILLS MODULES

Life Skills Modules is an integrated SHINE Core Empowerment Series into University Core Modules for all first year and first semester students at Taylor's University. It sets the stage for students to start right and a foundational pathway to SHINE Award.

Top employers and research findings indicate that in future, a balance of cognitive and soft skills become more important. In the 4IR, technology like AI will take over most of the cognitive scope staging soft skills as key differentiators for employees and entrepreneurs.

SHINE PROGRAMME

With a strong commitment to holistic development, Taylor's University is proud to introduce the SHINE Award - an achievement record that formally recognises and rewards all students who wish to reach their full potential by taking part in fun and diverse extra-curricular activities both on and off-campus.

The SHINE programme is a structured platform that helps our students to organise, manage and track their involvement and achievement in recognised extra-curricular activities using a point system.

The SHINE Programme empowers students with critical skills that employers seek in graduates, the "5Cs":



Creativity & Innovation



Critical Thinking & Problem Solving



Cultural Adaptation



Communication



Collaboration

THE LIFE SKILLS MODULES FOCUSES ON:



Emotional Intelligence



Self-awareness



Self-management



Social Awareness



Relationship Management

SHINE AWARD



The SHINE Award highlights the achievements and skills obtained by our graduates through their extra-curricular activities. Upon graduation, students who qualify for the SHINE Award will be conferred with a second transcript during their graduation, to complement their academic transcript, thus formally recognising their soft skills.

In order to qualify for the SHINE Award, students must participate in the SHINE Programme. Based on the points that they obtain, students will earn a Platinum, Gold, or Silver ranking in their SHINE Award.

VICE CHANCELLOR & PRESIDENT'S MESSAGE

Introduced in 2018, the Taylor's Curriculum Framework is the first-of-its-kind framework in Malaysia, which enables students to combine subjects of study. As a Taylor's student, you will now be able to shape and balance your own study programme. This is unique in Malaysia, adopting similar approaches by world's leading universities.

The flexibility of our degree and diploma programmes, combined with training modules in employability and life skills, is designed to ensure that Taylor's graduates are ready to meet future challenges. If you are able to adapt to the seismic change anticipated from the 4th Industrial Revolution, you will always be the first choice for leading employers.

There is much more to Taylor's University than our programmes. Taylor's attracts many of the brightest and most creative students from around the world. Our students come together to create a vibrant and exciting community which supports a wide range of sporting, cultural and leisure activities, which have become the hallmark of the Taylor's experience.

We hope that you will choose Taylor's University for your higher education and make your own contribution to the Taylor's experience. Most importantly, let us work together to ensure that when you graduate, you are ready to create your own successful and exciting future.

I hope that what you learn about Taylor's University will help you decide to make the best possible investment in your future and join our unique Taylor's community.

We look forward to seeing you at Taylor's Lakeside Campus.

With very best wishes,

Professor Michael Driscoll

Vice Chancellor and President of Taylor's University.



NOTES

NOTES



**TAYLOR'S
UNIVERSITY**

Wisdom · Integrity · Excellence

Rise With The Best

Taylor's University Lakeside Campus

JPT/BPP(D)1000-701/502(3) DU023(B)

No. 1, Jalan Taylor's, 47500 Subang Jaya,
Selangor Darul Ehsan, Malaysia.

Tel : +603-5629 5000

Fax : +603-5629 5001

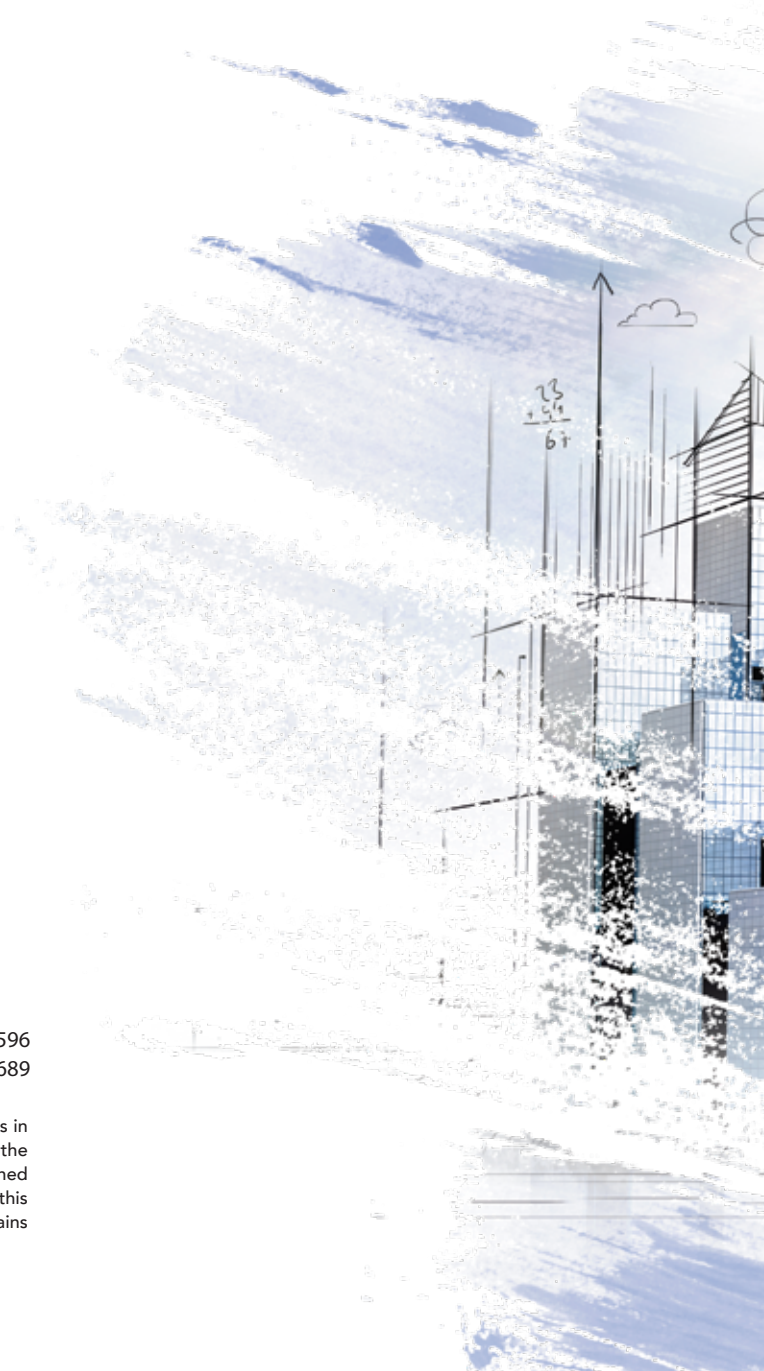
Email : applications@taylors.edu.my

Website : university.taylors.edu.my

Taylor's Education Counselling Centres

• Penang Office	Tel: +604-899 9396	Fax: +604-899 9596
• Johor Bahru Office	Tel: +607-351 3692/3694	Fax: +607-351 3689

This publication contains information, which is current as of November 2019. Changes in circumstances after this date may impact upon the accuracy or timeliness of the information. Taylor's University does its best to ensure that the information contained herein is accurate, but reserves the right to change any information described in this prospectus without notice. Readers are responsible for verifying information that pertains to them by contacting the university.



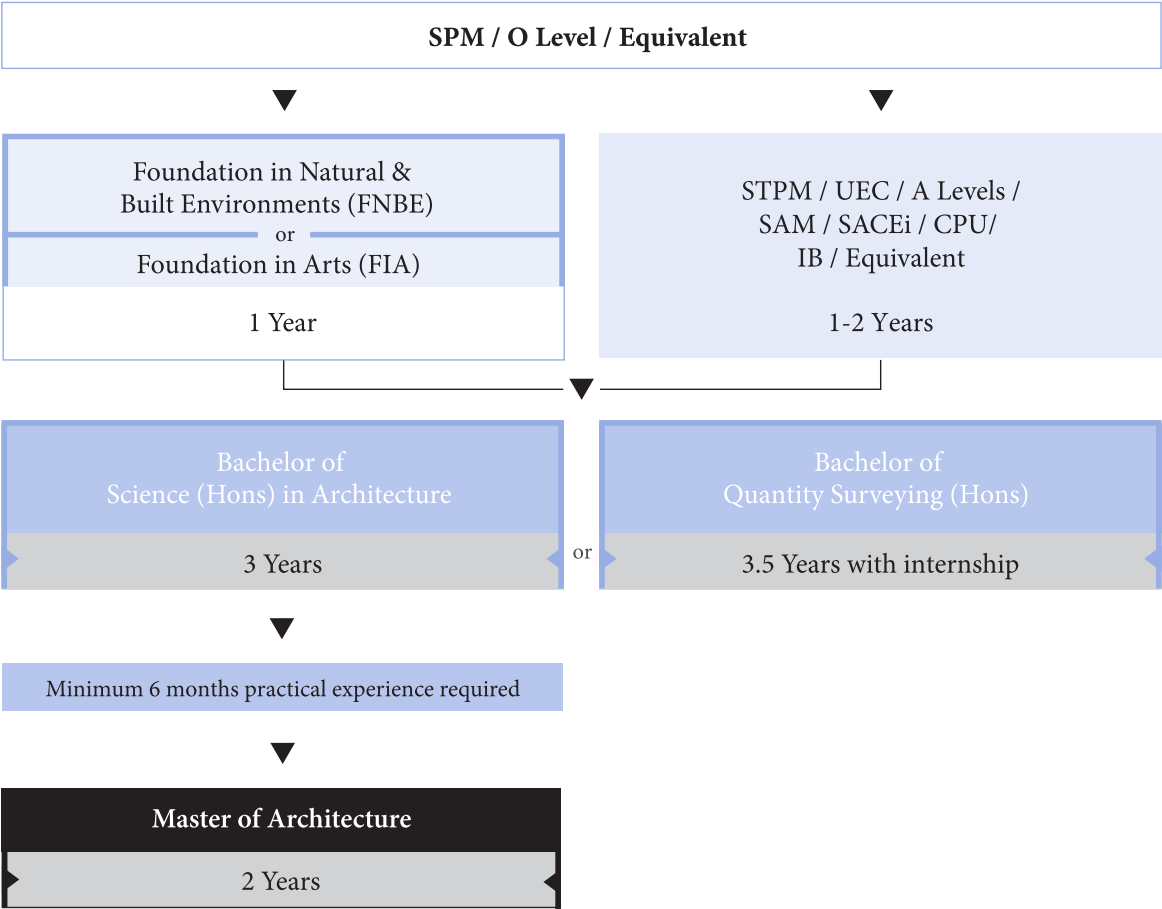
ARCHITECTURE, BUILDING AND DESIGN

Bachelor of Quantity Surveying (Hons)

Bachelor of Science (Hons) in Architecture

Master of Architecture

EDUCATION PATHWAY



BACHELOR OF QUANTITY SURVEYING (HONS)

3.5-Year Programme

KPT/JPS (R2/526/6/0056) (MQA/FA 8178) 03/26

INTAKE: MARCH & AUGUST

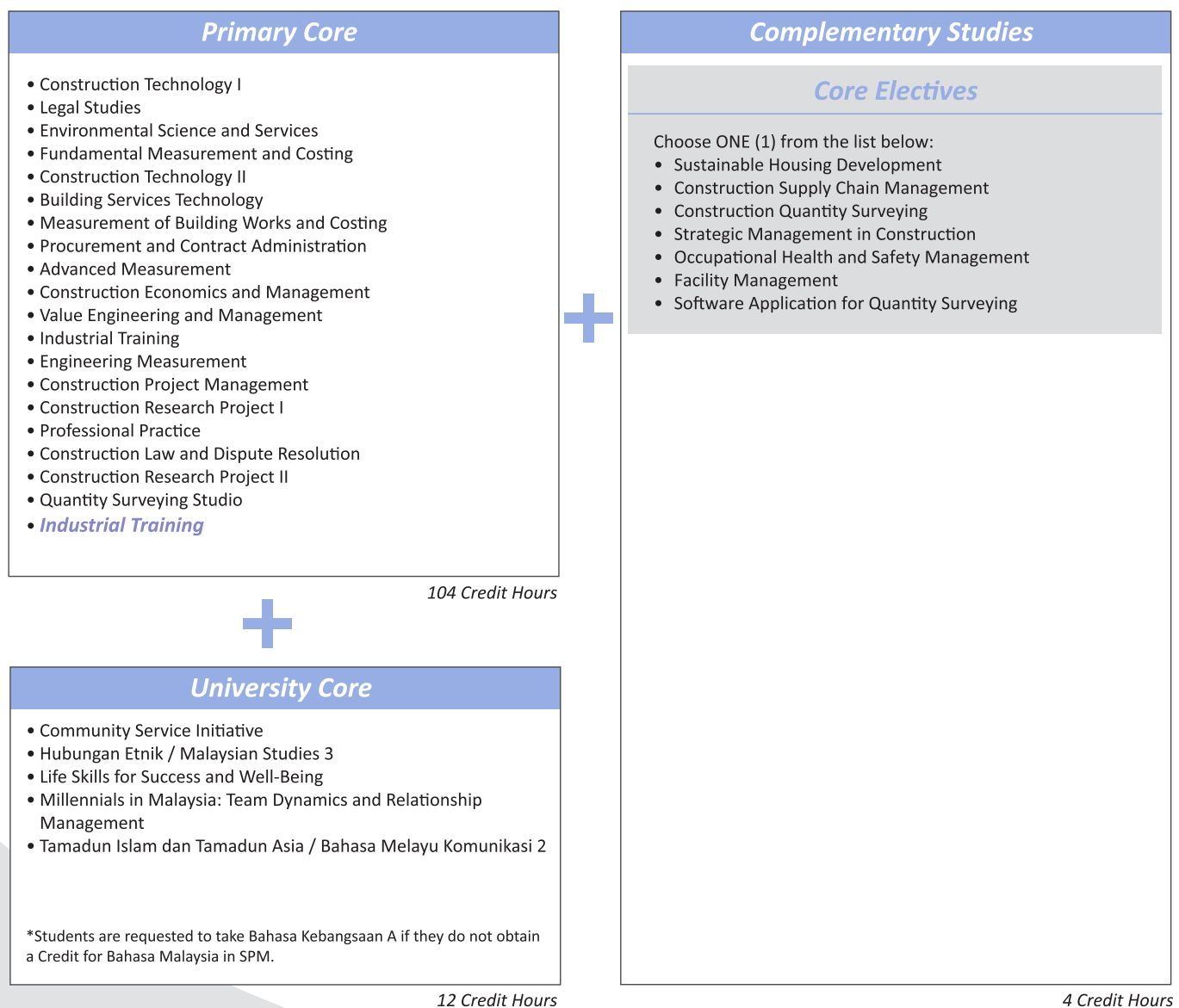
Graduates of this programme will understand the correlation between economics, technology, management and law, adding value to the financial and procurement management of construction projects.

Professionally Accredited Graduates

- Graduates gain automatic membership to the Board of Quantity Surveyors Malaysia (BQSM) or Lembaga Jurukur Bahan Malaysia (WBM).
- Graduates gain recognition from a network of over 140 countries through the Royal Institution of Chartered Surveyors (RICS).
- Accreditation from The Pacific Association of Quantity Surveyors (PAQS).

Internship

- 6-month industrial training to develop practical and relevant skills for future employment.



Note :

- Primary Core + University Core + Extension = Min. 3.5 Years (120 Credit Hours)
- Primary Core + University Core + Minor = Min. 3.5 Years (120 Credit Hours)
- Primary Core + University Core + Second Major = Min. 4 Years (148 Credit Hours)
- Primary Core + University Core + Free Electives = Min. 3.5 Years (120 Credit Hours)

QUANTITY SURVEYING PROFESSIONAL REGISTRATION

Bachelor of Quantity Surveying (Hons) (3½ years)



**Register as Graduate Member with
Board of Quantity Surveyors Malaysia (BQSM) and Corporate Member of the
Quantity Surveying Division of the Royal Institution of Surveyors Malaysia (RISM)**



- **Working Experience with a Registered Quantity Surveyor (minimum 2 years)**
- **Commences from date of registration as BQSM Graduate Member**



Assessment of Professional Competence (APC)



- **Register with BQSM as Registered Quantity Surveyor**
- **Register with RISM as a Quantity Surveyor that carries the title 'Sr'**

For more information, visit www.bqsm.gov.my

BACHELOR OF SCIENCE (HONS) IN ARCHITECTURE

3-Year
Programme

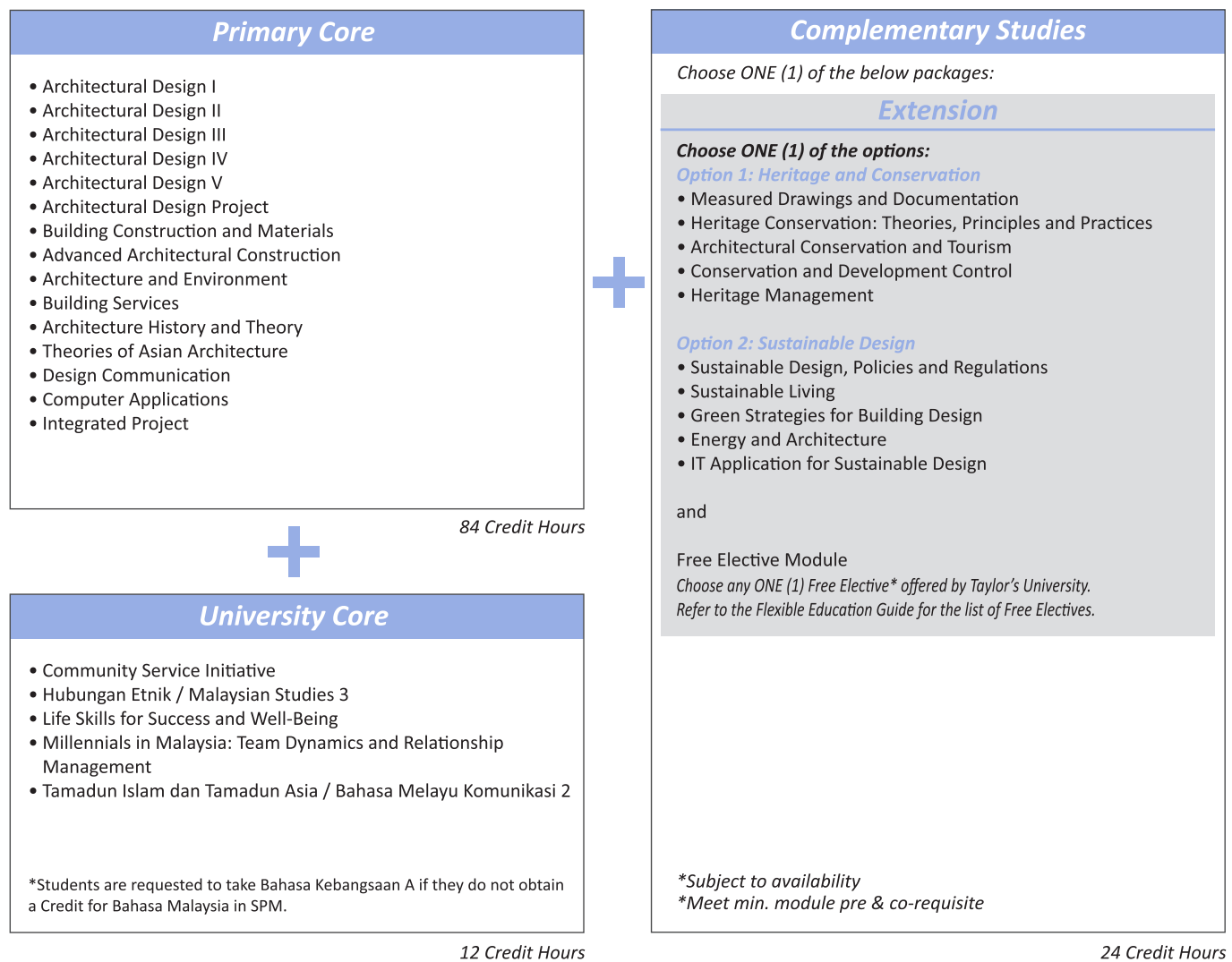
KPT/JPS (R2/581/6/0023) (MQA/FA 11341) 02/23

INTAKE: MARCH & AUGUST

This programme is a pre-professional course that provides a recognised qualification in Architecture and offers a pathway for further studies towards becoming an Architect.

Accredited Graduates

- Accreditation by the Board of Architects Malaysia or Lembaga Arkitek Malaysia (LAM), exempts graduates from the LAM Part I Examination.
- 7-week fieldwork in Year 1 requires students to document historical and heritage buildings.



Note :

- Primary Core + University Core + Extension = Min. 3 Years (120 Credit Hours)
- Primary Core + University Core + Minor = Min. 3 Years (120 Credit Hours)
- Primary Core + University Core + Second Major = Min. 3.5 Years (148 Credit Hours)
- Primary Core + University Core + Free Electives = Min. 3 Years (120 Credit Hours)

MASTER OF ARCHITECTURE

KPT/JPS (R/581/7/0021) (MQA/FA 2089) 01/23

2-Year
Programme

INTAKE: MARCH & AUGUST

This programme is a full-time professional Master's programme that centres on the advanced study of architecture. It adopts an integrated approach to learning architecture and aims to develop well-rounded architectural graduates, leading to the development and application of appropriate solutions to encounter demands of globalised and cross-cultural environments.

Students undertake a range of specialist and research-based studio projects supported by knowledge and application of technology and environment, cultural context, research and professional practice to forge the position of 'sustaining humanity'. Utilising design as research teaching pedagogy, the design studio forms the intersection of interests across three broad domains of inquiry, i.e. urbanity, community and technology.

Professionally Accredited Graduates

- Accreditation by the Board of Architects Malaysia or Lembaga Arkitek Malaysia (LAM) exempts graduates from the LAM Part II Examination.

Core Modules

- Culture & Community Design Studio
- Urban Design Studio
- Architectural Design Thesis I
- Architectural Design Thesis II
- Research Methods
- Dissertation I
- Dissertation II
- Environment & Technology I
- Environment & Technology II
- Professional Practice & Entrepreneurship I
- Professional Practice & Entrepreneurship II

Electives

- Architecture in the Humanities
- Heritage & Conservation
- Manifesto for Malaysian Architecture
- Nature & Architecture

Module Synopsis

Design & Cultural Studies

Culture & Community Design Studio

Promotes architectural design as an expression of the culture in a community context and delves into the principles and methods of interpreting meaning from a variety of users regarding designed objects of habitation.

Urban Design Studio

Investigates the ways of meeting the demand for environmental sustainability, with a key focus on the lived experience of cities.

Architectural Design Thesis I and Architectural Design Thesis II

Involves an in-depth study of the students' selected topic where they must demonstrate methodological and theoretical rigour within their proposed architectural design thesis, facilitated by an appointed supervisor. Culminates in a resolved architectural design scheme.

Research

Research Methods

Explores a range of architectural research methods, with an emphasis

on hypothesis formulation and gathering, recording and analysis of data. Trains students to integrate research skills as an inquiry process in design.

Dissertation I and Dissertation II

Investigates a particular aspect of architecture and the built environment facilitated by an appointed supervisor, leading to writing a critical piece of dissertation of 10,000 words.

Environment & Technology

Environment & Technology I

Addresses architecture as an integration of the environment and technology, and examines the role of building technology and sustainability in architectural design through analysis and evaluation of a complex building or group of buildings.

Environment & Technology II

Addresses architecture as an integration of the environment and technology for a complex building or group of buildings, and examines the role of technology and sustainability as a generative force in architectural design.

Professional Practice

Professional Practice & Entrepreneurship I

Focuses on the principles of professional practice, such as Conditions of Engagement of the Architect, professional fees, management of a small practice and ethics and codes of conduct expected of an architect.

Professional Practice & Entrepreneurship II

Focuses on the different types of construction contracts commonly used in the construction industry, and the architect's responsibilities and liabilities under the contracts.

ARCHITECTURE PROFESSIONAL REGISTRATION

Obtain architecture degree(s) with a minimum of 5 years duration of study



LAM Part I & II Examinations



Register as Graduate Architect of the
Board of Architects Malaysia or Lembaga Arkitek Malaysia (LAM)



- Working Experience with a Registered Architect (minimum 2 years)
- Commences from date of registration as LAM Graduate Architect



LAM Part III Professional Examination



- Register as Architect of the Board of Architect or Lembaga Arkitek Malaysia (LAM) that carries the title 'Ar'

Graduates who obtained the Bachelor of Science (Hons) in Architecture and the Master of Architecture programmes that are accredited by the Board of Architects Malaysia will be exempted from the LAM Part I and Part II Examinations.

For more information, visit www.lam.gov.my



**TAYLOR'S
UNIVERSITY**

Wisdom • Integrity • Excellence

Taylor's University Lakeside Campus

JPT/BPP(D)1000-701/502(3) DU023(B)

No.1, Jalan Taylor's, 47500 Subang Jaya,
Selangor Darul Ehsan

Tel : 603-5629 5000 Fax : 603-5629 5001

Email : applications@taylors.edu.my

university.taylors.edu.my

- Penang Office Tel : 604-899 9396 Fax : 604-899 9596
- Johor Bahru Office Tel : 607-351 3692 / 3694 Fax : 607-351 3689

This publication contains information, which is current as of November 2018. Changes in circumstances after this date may impact upon the accuracy or timeliness of the information. Taylor's University does its best to ensure that the information contained herein is accurate, but reserves the right to change any information described in this prospectus without notice. Readers are responsible for verifying information that pertains to them by contacting the university.